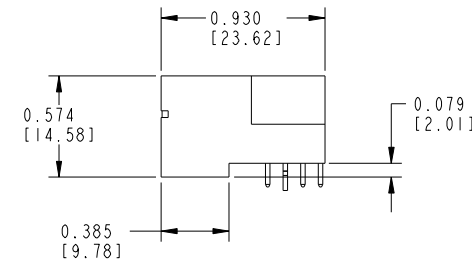
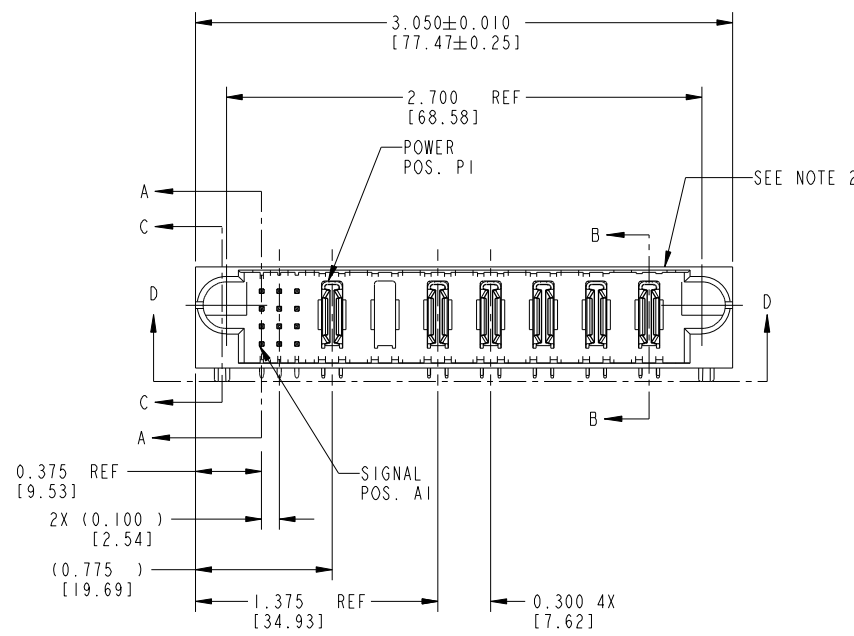
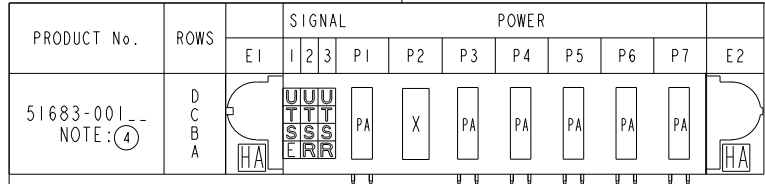


Tous droits strictement réservés. Reproduction ou communication à des tiers interdite sous quelque forme que ce soit sans autorisation écrite du propriétaire. Propriété de c FCI. Droits de reproduction FCI.



All rights strictly reserved. Reproduction or issue to third parties in any form whatever is not permitted without written authority from the proprietor. Property of FCI. Copyright FCI.



CODE	DIM "M" MATING LENGTH	CONTACT TYPE
PA	N/A [N/A]	POWER
E	0.220 [5.59]	SIGNAL
S	0.270 [6.86]	SIGNAL
T	0.270 [6.86]	SIGNAL
U	0.270 [6.86]	SIGNAL
R	0.270 [6.86]	SIGNAL
HA	N/A [N/A]	HOLD-DOWN
X	OMMITTED	N/A

mat'l code				SEE NOTES		tolerances unless otherwise specified		CUSTOMER COPY	
ltr	ecn no.	dr	date	linear	.XX±.01/0.X±0.3	projection	www.fciconnect.com		
A	V02392	JRW	10-10-00		.XXX±.005/0.XX±0.13		title 12S + 7P RIGHT ANGLE SOLDER HEADER		
B	V12544	DAI	02/20/02		.XXX±.0020/0.XXX±.051		product family PWRBLADE code 213		
C	V03-0571	TAB	05/28/03	angles	0°±2°		size dwg no 51683 sheet 1 of 4		
D	DG05-0288	CS	08/18/05	dr	S. ROYER 12/10/99	INCH/MM	scale 1:1		
E	D606-0011	CS	01/09/06	enr	J. BROWN 12/10/99				
F	D608-0253	SH	09/12/08	chr	J. BROWN 12/10/99				
				appd	J. BROWN 01/18/00				
sheet index	revision sheet	F 1	F 2	F 3	F 4				

FCI		www.fciconnect.com	
product family PWRBLADE		code 213	
size dwg no 51683		sheet 1 of 4	
cage code 22526			

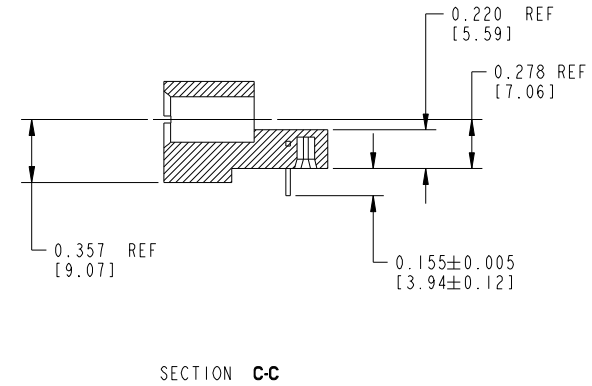
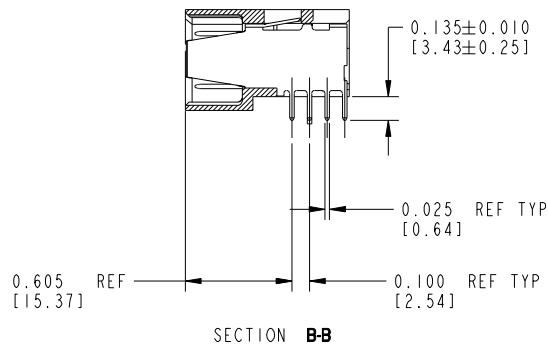
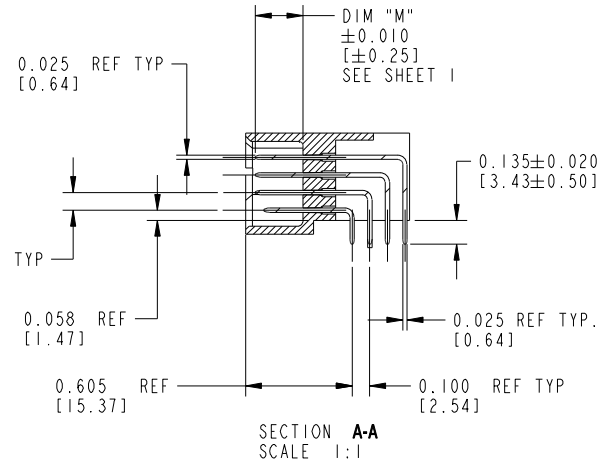
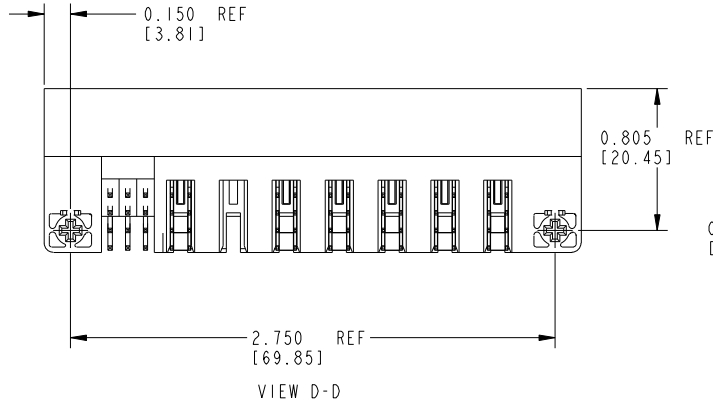
Pro/E

cage code 22526

Tous droits strictement réservés. Reproduction ou communication à des tiers interdite sous quelque forme que ce soit sans autorisation écrite du propriétaire. Propriété de c.FCI. Droits de reproduction FCI.

All rights strictly reserved. Reproduction or issue to third parties in any form whatever is not permitted without written authority from the proprietor. Property of FCI. Copyright FCI.

PRODUCT NUMBER
51683-001--
NOTE: ④



mat'l code SEE NOTE 1				tolerances unless otherwise specified		CUSTOMER COPY		FCI www.fciconnect.com	
ltr	ecn no.	dr	date	linear	.XX±.01/.X±.3	projection	title 12S + 7P RIGHT ANGLE SOLDER HEADER		
F					.XXX±.005/.XX±.13		product family PWRBLADE code 213		
				angles	.XXX±.0020/.XXX±.051	INCH/MM	size dwg no 51683		
				dr	0°±2°	scale 1:1	sheet 2 OF 4		
				enr	S. ROYER 12/10/99				
				chr	J. BROWN 12/10/99				
				appd	J. BROWN 01/18/00				
sheet index	revision sheet								

cage code 22526

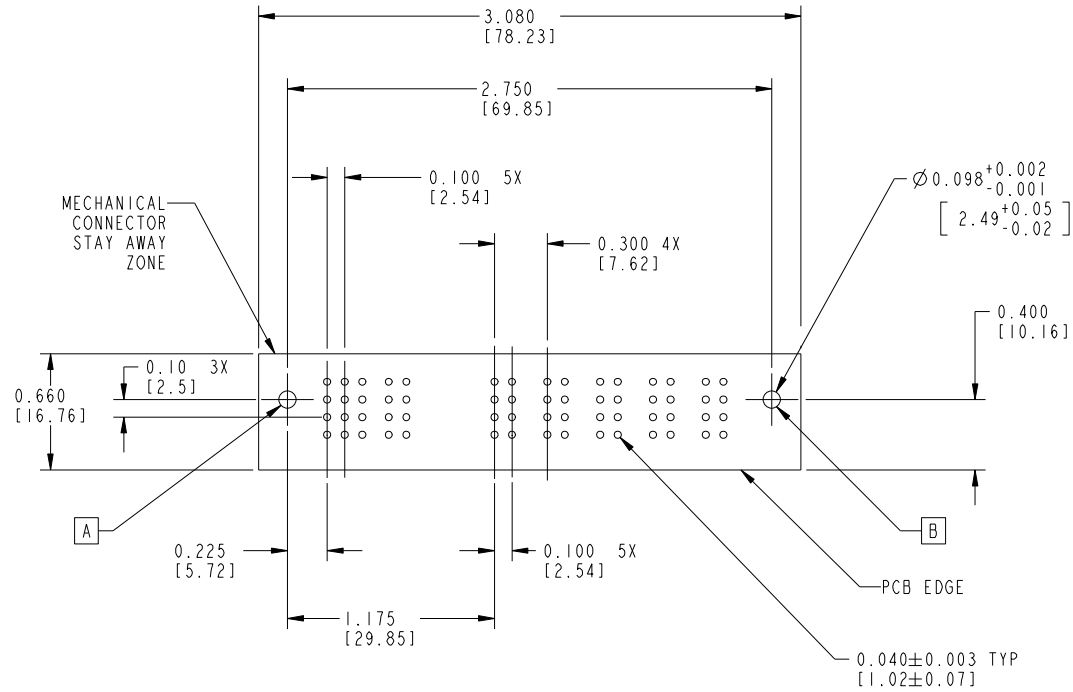
Pro/E

Tous droits strictement réservés. Reproduction ou communication à des tiers interdite sous quelque forme que ce soit sans autorisation écrite du propriétaire. Propriété de c.FCI. Droits de reproduction FCI.



All rights strictly reserved. Reproduction or issue to third parties in any form whatever is not permitted without written authority from the proprietor. Property of FCI. Copyright FCI.

PRODUCT NUMBER
51683-001--
NOTE: ④



RECOMMENDED PCB LAYOUT

mat'l code		SEE NOTES		tolerances unless otherwise specified		CUSTOMER COPY		www.fciconnect.com	
ltr	ecn no.	dr	date	linear	.XX±.01/.X±.3	projection		title 12S + 7P RIGHT ANGLE SOLDER HEADER	
F				angles	.XXX±.005/.XX±.13 .XXX±.0020/.XXX±.051			product family PWRBLADE	code 213
				dr	S. ROYER 12/10/99	scale 1:1	size A	dwg no 51683	sheet 3 OF 4
				enr	J. BROWN 12/10/99				
				chr	J. BROWN 12/10/99				
				appd	J. BROWN 01/18/00				
sheet index	revision sheet								

Pro/E

cage code 22526



All rights strictly reserved. Reproduction or issue to third parties in any form whatsoever is not permitted without written authority from the proprietor. Property of FCI. Copyright FCI.

Tous droits strictement reserves. Reproduction ou communication a des tiers interdite sous quelque forme que ce soit sans autorisation écrite du propriétaire. Propriete de c FCI. Droits de reproduction FCI.

PRODUCT NUMBER
51683-001--
NOTE: ④

CONNECTORS NOTES:

- ① HOUSING MATERIAL: UL 94 V-0 GLASS FILLED HIGH TEMP THERMO PLASTIC
SIGNAL PIN MATERIAL: COPPER ALLOY
POWER CONTACT MATERIAL: COPPER ALLOY
- ② "MANUFACTURER" NAME, P/N, AND DATE CODE TO APPEAR ON THIS SURFACE
- 3. PRODUCT SPECIFICATION GS-12-149
- ⚠ 4. PLATING:
SEE ITEM 1 & 2 IN PRINT 10064183 FOR PLATING SPEC OF 51683 AND 51683LF RESPECTIVELY

PCB NOTES:

- 5. ALL DIMENSIONS ARE BASIC UNLESS OTHERWISE SPECIFIED.
- 6. ALL THROUGH HOLES ARE LOCATED WITH A TRUE POSITION OF .004
- 7. ALL HOLE DIAMETERS ARE FINISHED HOLE SIZE
- 8. Ø0.098 THROUGH HOLES ARE UNPLATED
- 9. Ø.0453/1.151 DRILLED HOLES
PLATED WITH .0003/.007 MIN SnPb
OVER .001/1.03 to .003/.08 PLATING TO ACHIEVE
A .040±.003/1.02±.08 HOLE

mat'l code		SEE NOTES		tolerances unless otherwise specified		CUSTOMER		FCI	
ltr	ecn no.	dr	date	linear	.XX±.01/.X±.3	COPY		www.fciconnect.com	
F					.XXX±.005/.XX±.13	projection	title 12S + 7P RIGHT ANGLE SOLDER HEADER		
				angles	.XXX±.0020/.XXX±.051		product family PWRBLADE code 213		
				dr	0°±2°	INCH/MM	size	dwg no	sheet
				enr	S. ROYER 12/10/99	scale	A	51683	4 of 4
				chr	J. BROWN 12/10/99	1:1			
				appd	J. BROWN 01/18/00				
sheet index	revision sheet								

cage code 22526

Pro/E